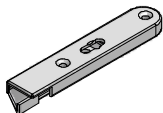


# CALDWELL

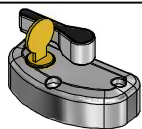
SOLUTIONS THAT SET NEW STANDARDS

Telephone 024 7643 7900

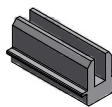
## POSITIONS FOR BS7950 HARDWARE ON TIMBER WINDOWS



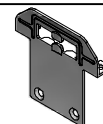
Security tilt latch- PE615  
With stainless steel reinforcement plate providing extra strength in the top corners of the bottom sash.



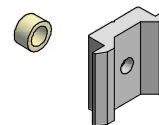
Security sash locks PE7950  
With a unique patent pending design (App No 0505041.4), the 2 security sash locks, along with the 2 security keeps, ensures that the sashes remain locked together when under attack.



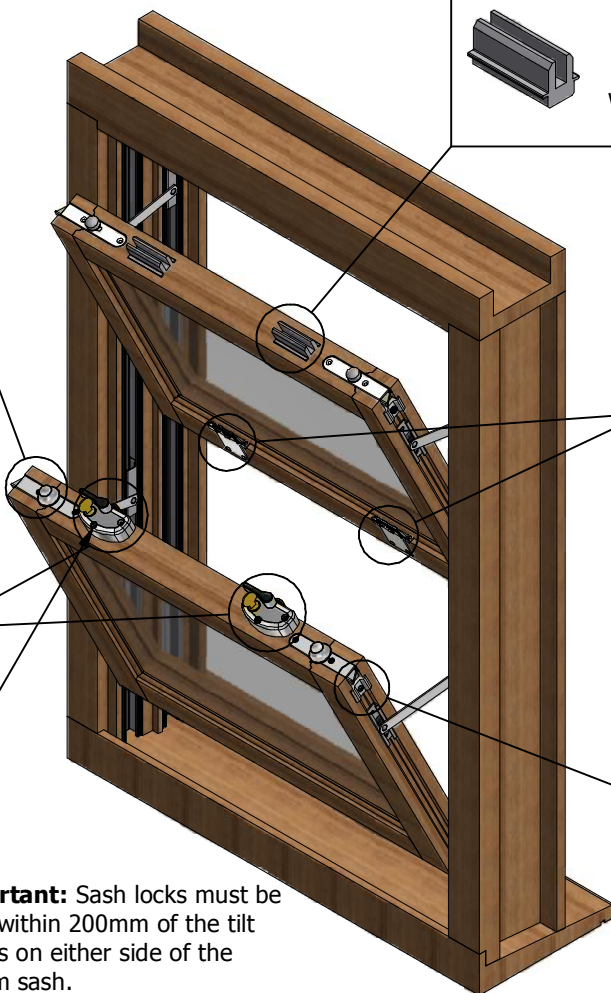
Security block PE66612  
For use on the top rail of the top sash. Ensures that there is still engagement in the head of the window if the top sash is jemmied downward.



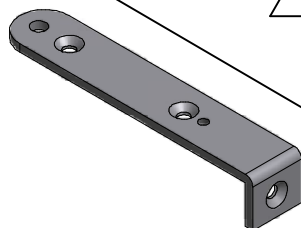
Security sash lock keep UK715  
Made from stainless steel, the security keep has formed strengthening ribs & has two tangs which the cam of the security keep secures around.



Sash spacer & 'O'-ring KP1009  
The spacer takes any free play that exists between the sides of the sash & the jamb thus preventing the tilt latches from becoming disengaged if the sash is jemmied to the side.

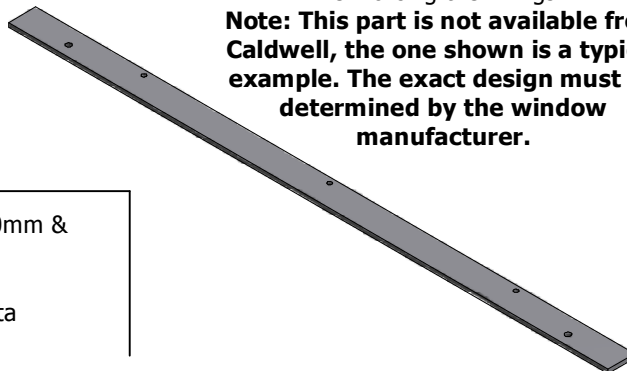


**Important:** Sash locks must be fitted within 200mm of the tilt latches on either side of the bottom sash.



Tilt latch fixing plate  
Fixing plate will help the tilt latch to stay firmly in position by reinforcing the fixings.  
**Note: The fixing plate is not available from Caldwell, the one shown is a typical example. The exact design must be determined by the window manufacturer.**

Tilt latch and Sash lock reinforcement  
This is required to help the Tilt Latch and Sash Lock stay firmly in position by reinforcing the fixings.  
**Note: This part is not available from Caldwell, the one shown is a typical example. The exact design must be determined by the window manufacturer.**



**Important:** Gap between sash & frame must measure between 3.0mm & 3.5mm on each side.

Please refer to data sheet 00454 for specific part numbers also data sheet 00516 for more detailed fixing details.

All of the information shown on this data sheet was correct at the time of issue. All information however is subject to change and therefore it is advisable to check with Caldwell Hardware to ensure that you have the latest issue level.