

Newsletter March 2007

Hello, sorry it has been so long between editions.

2007 is now well underway and appears to be bringing us as many changes and challenges as 2006 did.

The revised BS7950 standard is beginning to attract the interest of specifiers and architects. Following our hardware being used to pass the security requirements of the standard for vertical sliding windows interest is growing very rapidly.

We have developed a specific range of hardware to meet the revised standard and this will be available by the end of March. The hardware is designed to meet the requirements of the revised standard and will suit a wide range of window systems. Ultimately, testing of a window at an accredited test house is necessary to obtain evidence of compliance. If this is a path you are interested in pursuing we would suggest you contact us and we will be pleased to give you guidance.



The image above is of the new tilt latches we have designed to be used on windows required to meet BS7950. The range of new parts includes a sash lock with a radically new cam design (patent applied for). The hardware will be available in white, gold, and chrome finishes.

We will be making further announcements on the new range of products in the very near future.

If you would like further information on the new security products please drop me a line by post or e-mail bhumphries@caldwell.co.uk and I will get back to you.

If you make contact with our Technical Services department you may have come across 2 new names in recent weeks. Richard Taylor and Ryan Carr have joined us to add to our strength in product design, product development, and customer technical support. Both of the guys are settling in well and making a strong contribution to our Technical Services team.



The recently published Approved Document Part B (Volume 1 – Dwelling Houses) which comes into effect April 2007 has an interesting point or two you may wish to consider if you manufacture Emergency Egress Windows or doors. In B1 Section 2 Means of Escape, Section 2.8 it stipulates in note 2 that ***'Locks (with or without removable keys) and stays may be fitted to egress windows, subject to the stay being fitted with a release catch, which may be child resistant'***.

You can download the entire document free of charge by going to the website www.planningportal.gov.uk which, we would strongly recommend if you are involved in egress windows or doors in any way.

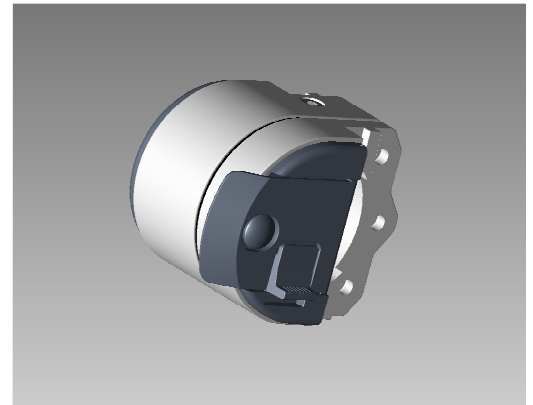
During the latter part of 2006 we were able to announce that Roto Frank of Poland, which is based in Warsaw, had become our official distributor for Poland, Ukraine, and Belarus.



This new arrangement was as a direct result of regular demand for our products from areas formally known as Eastern Europe.

We are delighted with this new arrangement and also very pleased at how sales of our products have already grown in these areas of Europe once deemed distant and difficult to access.

We have recently launched our modified and improved Series 3000 saddle pivot mechanism. The new design which features more die cast components has enhanced strength features and has been supplied on a large high rise project in Birmingham. The new pivot was very well received by both the fabricator and the main contractor.



The Series 3000 pivot is supplied with purpose designed attachment plates to suit most popular window systems.

You can download the technical data sheets by visiting our web site www.caldwell.co.uk and following the path ***Product Information – Pivot Window Hardware – 3000 Pivot Hinge***. The web site is full of data on our products and much of it is ready to download.

If not just e-mail us at sales@caldwell.co.uk and we will get back to you ASAP.