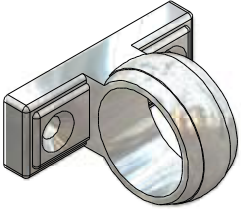


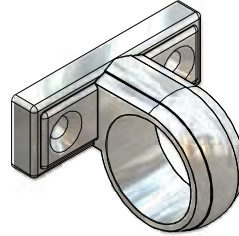
Telephone 024 7643 7900

## SASH RING & SASH HOOK



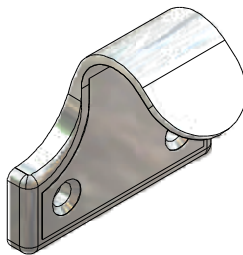
UK624 SASH RING

Traditional style  
Pressure die cast for greater accuracy and consistency (superior to brass)  
Consistent hole centres  
Similar decorative features to UK616.



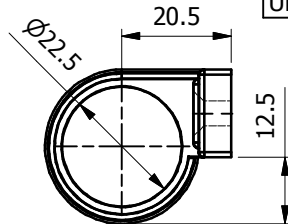
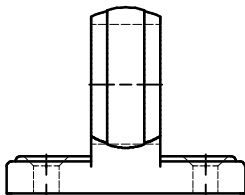
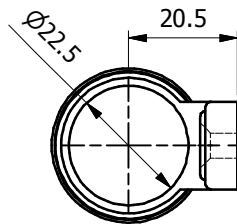
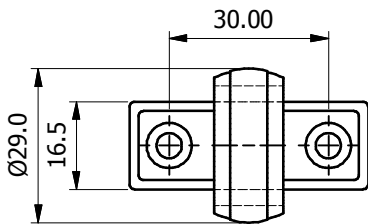
UK745 OFFSET SASH RING

This has all the benefits of the UK624 but due to the offset offers more clearance for thinner sash profiles.



UK616 SASH HOOK

Traditional style  
Pressed steel for strength (superior to brass)  
Consistent hole centres (superior to brass)  
Similar decorative features to UK624.

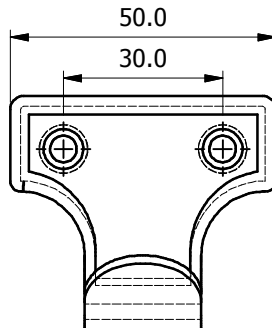
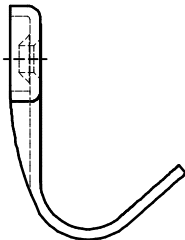


Other finishes are available on request subject to quantity

ORDER CODE	ORDER CODE	FINISH
UK624BN	UK745BN	BRUSHED NICKEL
UK624CH	UK745CH	CHROME
UK624DG	K745DG	DAWN GOLD
UK624HIPCAWHITE	UK745HIPCAWHITE	WHITE P.C.

Material: Zinc pressure die cast

The UK745 is dimensionally the same apart from the offset



Other finishes are available on request subject to quantity

ORDER CODE	FINISH
UK616BN	BRUSHED NICKEL
UK616CH	CHROME
UK616DG	DAWN GOLD
UK616HIPCAWHITE	WHITE P.C.

Material: Pressed steel

SASH LOCKS ARE AVAILABLE IN FINISHES TO MATCH THE ABOVE PRODUCTS

All of the information shown on this data sheet was correct at the time of issue. All information however is subject to change and therefore it is advisable to check with Caldwell Hardware to ensure that you have the latest issue level.