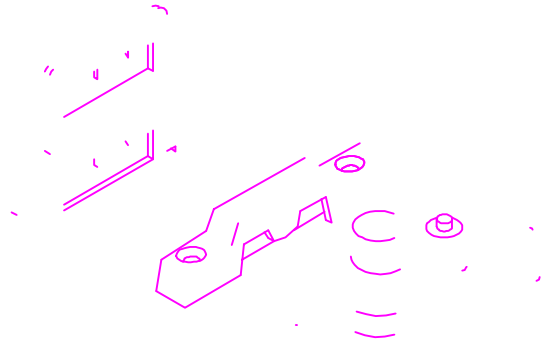
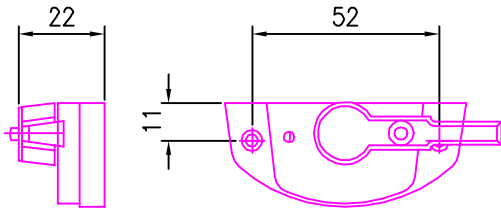


CALDWELL SPECIALIST HARDWARE	SLIDIN SASH
600 TYPE SASH LOCK	

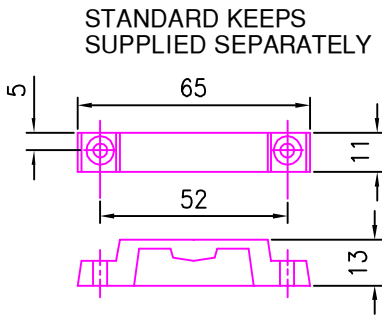


9600
SASH LOCK
Cam action lever.
Push button locking
is available for added security.
(Key sold separately ref: 9114)

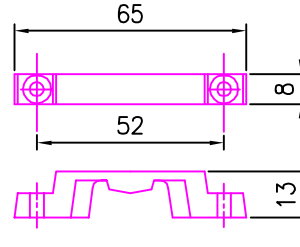
9400
SASH LOCK
Cam action lever.
Non lockable variant.



MATERIAL
Lock:- Zinc Pressure Die-casting.



Part No 9415

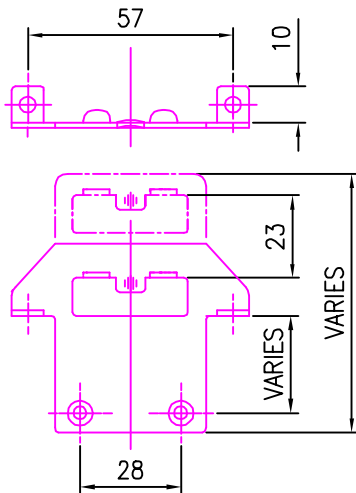


Part No 9405

MATERIAL
Keep:-Zinc Pressure Die-casting.

Other finishes are available on request
subject to quantity.

Order code	Finish
9400W	WHITE P.C.
9400B	BLACK P.C.
9400BZ	BRONZE P.C.
9600W	WHITE P.C.
9600B	BLACK P.C.
9600BZ	BRONZE P.C.
9600RIBCO	POLISHED GOLD
9405W	WHITE P.C.
9405B	BLACK P.C.
9405BZ	BRONZE P.C.
9405RIBCO	POLISHED GOLD
9415W	WHITE P.C.
9415RIBCO	POLISHED GOLD



MATERIAL
Keep:- Stainless steel
Part No VARIOUS
Single stage keepers
Double stage keepers
which allow trickle
ventilation to
Building Regulations Part L.

All of the information shown on this data sheet was correct at the time of issue.
All information however is subject to change and therefore it is advisable to check
with Caldwell Hardware to ensure that you have the latest issue level.