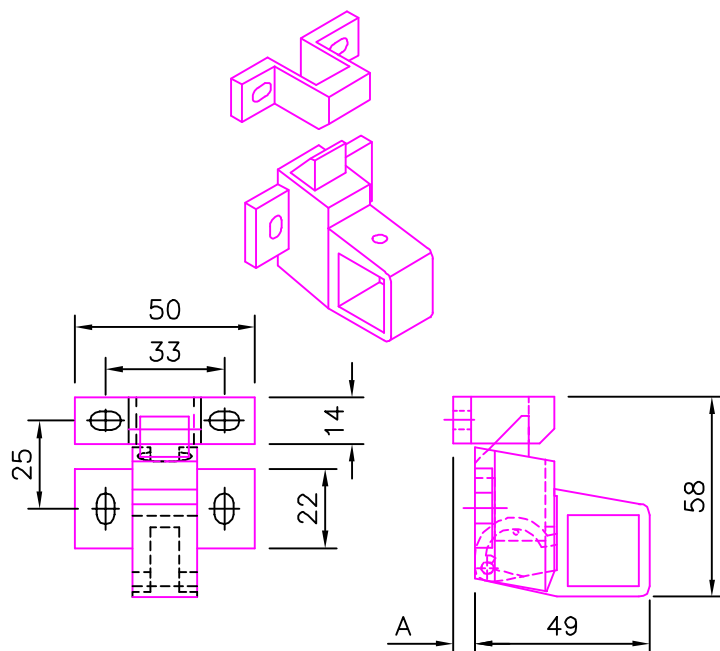


**CALDWELL SPECIALIST HARDWARE****CASEMENT****211 TYPE SPRING CATCH****211 TYPE  
SPRING CATCH**

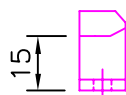
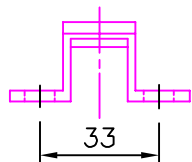
An innovative lever movement allows operation from almost any angle. It's wide arc offers successful pole operation when required and they can be linked in a pair or triple if a single catch is insufficient. Gives peace of mind as the catch can be re-engaged just by closing the window.

**MATERIAL**

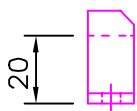
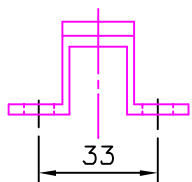
Catch:- Extruded aluminium  
to BS1474.

Tongue:- PVC

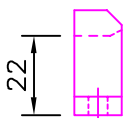
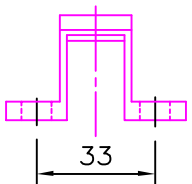
Spring:- Spring steel

**STANDARD KEEPS  
SUPPLIED WITH CATCH**

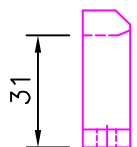
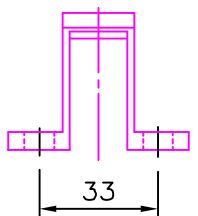
Pack No 21100  
To suit flush  
(Dim A=0)



Pack No 21105  
To suit 5mm step  
(Dim A=5)



Pack No 21107  
To suit 7mm Step  
(Dim A=7)



Pack No 21116  
To suit 16mm Step  
(Dim A=16)

**MATERIAL**

Keep:- Extruded aluminium.  
to BS1474.

**PACKERS:**

Packers are available for additional spacing of the catch keepers.  
2mm Aluminium Part No 24012  
3mm Aluminium Part No 24022  
5mm Black Nylon Part No 23124

Other finishes are available on request  
subject to quantity.

Order code	Finish	Description
21100ANSAT	SATIN ANODISED	0mm Step
21100HIPCAWHITE	WHITE P.C.	0mm Step
21105ANSAT	SATIN ANODISED	5mm Step
21105HIPCAWHITE	WHITE P.C.	5mm Step
21107ANSAT	SATIN ANODISED	7mm Step
21107HIPCAWHITE	WHITE P.C.	7mm Step
21116ANSAT	SATIN ANODISED	16mm Step
21116HIPCAWHITE	WHITE P.C.	16mm Step
24012		2mm Pack
24022		3mm Pack
23124		5mm Pack

All of the information shown on this data sheet was correct at the time of issue. All information however is subject to change and therefore it is advisable to check with Caldwell Hardware to ensure that you have the latest issue level.