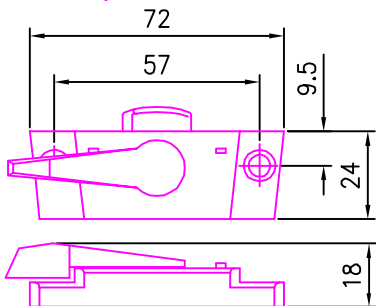
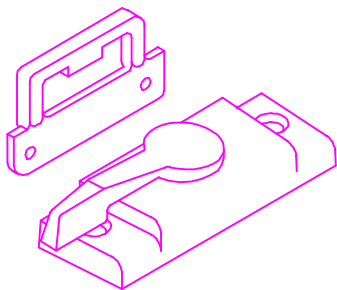


**CALDWELL SPECIALIST HARDWARE**

**9000 & 9100 TYPE SASH LOCK**

**SLIDING SASH**



9000  
SASH LOCK  
Pull in type lock  
for added security

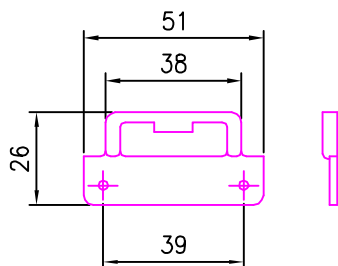
9100  
SASH LOCK  
Pull in type lock  
for added security  
Push button locking for added security.  
(Not shown but similar)

MATERIAL  
Lock: Zinc pressure die-casting.

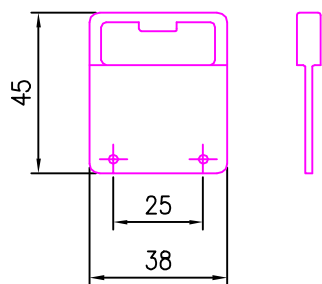
STANDARD KEEPS  
SUPPLIED SEPARATELY

MATERIAL  
Keep: Zinc pressure die-casting.

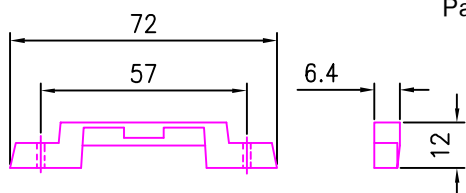
Other finishes are available on request  
subject to quantity



Part No 8427



Part No 9062



Part No 9015

Order code	Finish
9000W	WHITE P.C.
9000B	BLACK P.C.
9000BZ	BRONZE
9100W	WHITE P.C.
9100B	BLACK P.C.
9100BZ	BRONZE
8427W	WHITE P.C.
8427B	BLACK P.C.
8427BZ	BRONZE
8427GD	GOLD
9062W	WHITE P.C.
9062B	BLACK P.C.
9062BZ	BRONZE
9015W	WHITE P.C.
9015B	BLACK P.C.
9015BZ	BRONZE
9015RIBCO	RIBCO GOLD

All of the information shown on this data sheet was correct at the time of issue.  
All information however is subject to change and therefore it is advisable to check  
with Caldwell Hardware to ensure that you have the latest issue level.